

Every home should be a **Master** *Suite*[®]



Elegant storage solutions by **MasterSuite**



I imagine an elegantly efficient storage system that complements your décor, integrating functionality and style, all while adding value to your home. The MasterSuite® line of laminate storage systems offers the premium options and luxurious look you expect.



Pull-Out Hamper keeps laundry items out of sight.

No

two homes are exactly alike, and that's why MasterSuite® isn't sold in boxes as a one-size-fits-all solution. MasterSuite® is professionally installed, providing you with a superior custom storage solution that reflects your demanding tastes.



Shoe Cubbies organize footwear and accessories.



Clean White Raised-Panel



Clean White Flat-Front

MasterSuite® offers you the finest elements of custom design.



- Highest-quality laminate materials and hardware
- Raised-panel and flat-front drawer and door option
- Warm Cognac, Natural Maple, Antique White and Clean White finishes

Valet Rod holds items while getting dressed or packing for a trip.

Custom design your **Master** Suite®

F

orm and function combine in a MasterSuite® closet. It makes the most of every square foot of available space, while providing a rewarding sense of beauty and order every time you open the closet door.

- Quality European hardware and chrome fixtures
- Customized jewelry trays, tie hangers and shoe storage
- Allows for both floor- or wall-mounted systems



20" deep Closet Hutch offers additional shelf and drawer space.



Warm Cognac Raised-Panel



Clean White Raised-Panel

The sophisticated design of MasterSuite® is as smart as it is attractive. Whether you're reorganizing a reach-in or a walk-in closet, MasterSuite® has you covered in style.

- Top-quality materials and a wide selection of luxurious finishes to match your home.
- Many thoughtful accessories are available, making it easy to organize belts, ties and jewelry.
- Upgrade options include valet rods, hutches, and shoe cubbies that maximize your closet space.

*M*asterSuite® can be designed to enhance any space, from standard-sized reach-in or walk-in closets to expansive dressing rooms in the most luxurious custom homes.

- A full range of units provide storage space for every conceivable need.
- MasterSuite® can be designed to fit any room layout and dimension.
- Computerized design tools allow you to consider a variety of options.



Framed doors can be finished with the glass of your choice.



Warm Cognac Raised-Panel



Antique White Raised-Panel

It's not only for the master bedroom. A MasterSuite® closet can help a child or teen learn a sense of order at an early age. A MasterSuite® closet in the guest room extends a special feeling of welcome and comfort. Whatever the application, MasterSuite® offers the flexibility to meet a wide range of storage needs. With style.

*M*asterSuite® means quality because it's produced by ClosetMaid®, the industry leader in quality storage systems. As the best from the best, MasterSuite® provides exclusive benefits.

- Designed to integrate seamlessly with ClosetMaid® shelving systems
- Superb customer service during the planning stages and after installation
- MasterSuite® is backed by ClosetMaid's free replacement policy



A Jewelry Tray adds a touch of luxury.



Antique White Raised-Panel



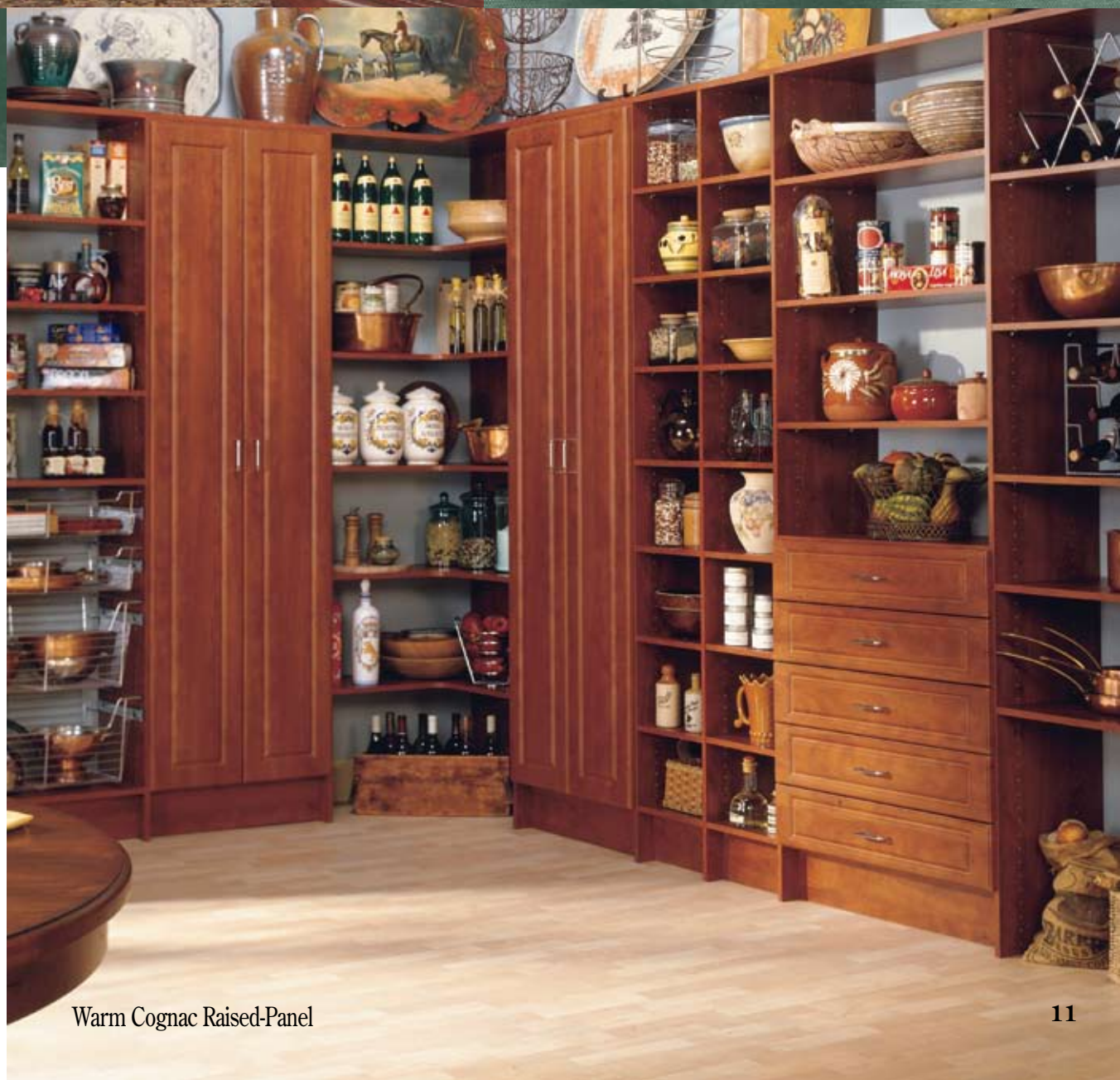
Clean White Raised-Panel

The MasterSuite® raised-panel and flat-front Clean White laminate promote a sense of calm, order and organization that is particularly welcome in a kitchen. Combining MasterSuite® with wire baskets and shelving provides a perfect mix of visible and hidden storage that suits your every need.

*M*odern kitchens have a look all their own, and having a pantry that complements your contemporary kitchen décor really helps complete the look. As in every room, the rich colors and clean lines of MasterSuite® can turn your pantry into a showcase of style.



Cabinet doors provide enclosed storage space and give a kitchen clean, smooth lines.



Warm Cognac Raised-Panel



Adjustable Shelving System

Organization, clean lines, simple installation and adjustable storage combine in this MasterSuite® pantry using ClosetMaid's ShelfTrack™ mounting system. Easy-to-install ShelfTrack™ standards and brackets allow optimum positioning of sturdy, attractive, easy-to-clean, white melamine shelving. Add a ClosetMaid® drawer kit for storing produce, linens and smaller items.

Options and accessories make MasterSuite® perfect for every room of every home.



Center Island Cabinets offer convenient drawer and tabletop storage.



Smooth-sliding drawers are available in 6" and 10" heights.



Cabinet Doors offer function and style in pantry or closet.



Corner Rounder lets hangers slide unobstructed.



Bench provides convenient seating and extra storage.



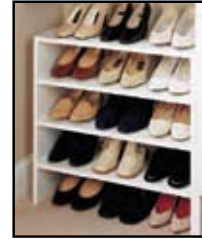
Crown Molding gives a custom cabinet look.



Closet Hutch offers shelf and drawer space.



Corner shelves maximize space in closets and pantries.



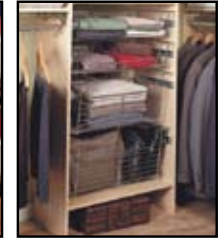
Stackable Shoe Racks expand to meet your storage needs.



Attractive Shoe Cubbies store footwear and accessories.



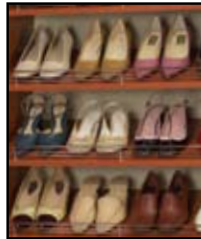
Designer Baskets in white and chrome store anything from produce to linens.



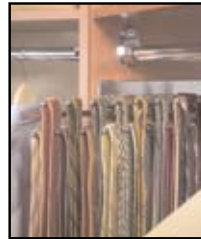
Closet Hutch combining 20" deep drawers and Pull-Out Hamper.



Framed Doors can be finished with glass of your choice.



Chrome Shoe Fences add a subtle shine to shoe storage.



Sliding Tie Rack provides easy access to neckwear.



Belt Rack slides in and out for easy access.



Jewelry Trays organize rings, bracelets, and other items.



Pull-Out Hamper in cognac, maple or white keeps laundry out of sight.



Slide-out chrome Valet Rod makes dressing or packing more convenient.



Optional chrome Hang Rods add a gleaming contrast.

Master the possibilities.

Raise your *Standards* for garage storage.



*G*et more organized storage space in your garage with the custom, finished look of professionally installed MasterSuite®.

The original MasterSuite® Garage line offers durable 3/4" material with a thermal-fused melamine finish to protect against stains and moisture, plus heavy-duty edge banding, attractive chrome handles, full cabinet back panels, adjustable legs and European-style hinges. Cabinets are available in 24" and 32" widths.



Versatile solutions from MasterSuite® make the most of your space.

T

he MasterSuite® Garage E Series provides a quality organization system that's flexible and economical for garage, laundry or basement. It features a durable, easy-to-clean white melamine finish on 5/8" material, with full cabinet back panels. Storage cabinets are available in 24" and 48" widths in both 16" and 24" depths.

With a variety of different sizes of custom components for work areas, tool storage and other special uses, the possibilities are unlimited.



Additional storage space and additional work space, where you need it most.



MasterSuite® Garage E Series

Storage style for every need. **Master** *Suite*®

Elegant storage solutions made affordable by **MasterSuite**

*M*asterSuite® brings an elegant sense of order and affordable sophistication to every room of your home.

- MasterSuite® means top quality backed by the ClosetMaid® brand.
- MasterSuite® means options to custom-design your ideal storage space.
- MasterSuite® means economical style wherever you have storage needs.
- MasterSuite® means storage solutions done right, right where you need them.



For more information on ClosetMaid's MasterSuite® and all of our other storage solutions for the entire home, contact your installing dealer or call 1-800-221-0641.

CLOSETMAID®

P.O. Box 4400
Ocala, Florida 34478
1-800-221-0641
www.closetmaid.com

04-11483
©2006 ClosetMaid Corporation


EMERSON
Storage Solutions